



LIFT-OFF PREVENTION SYSTEMS

Acc. 42901

Acc. 42902

BASIC MOUNTING INSTRUCTIONS



1. PLACE THE ACCESSORY IN ITS INSTALLATION POSITION AND FIX IT TO THE FOUNDATION AND LEG OF THE SILO/TANK

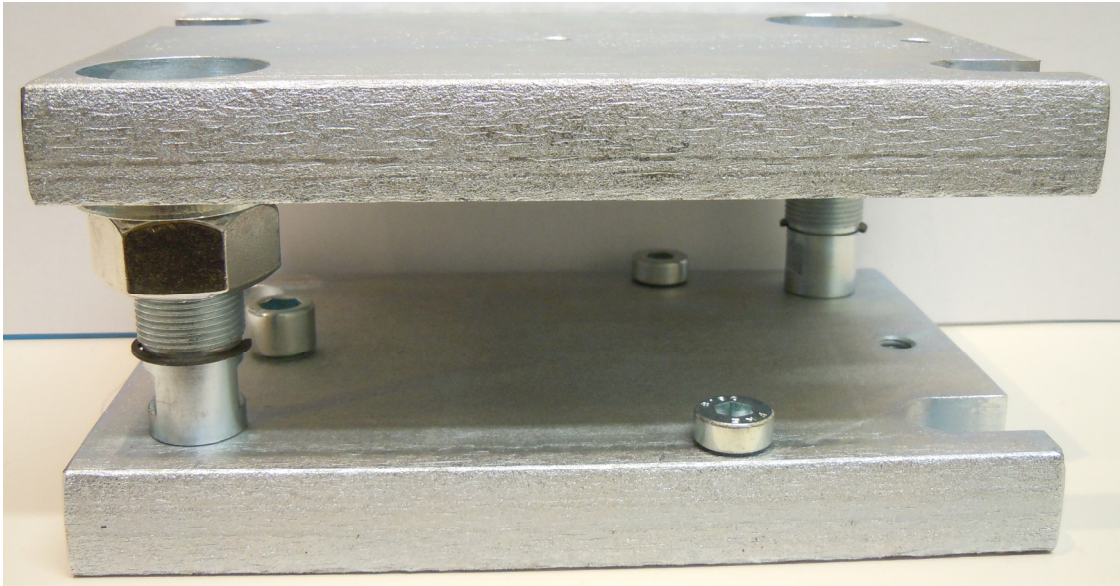


Figure 1

2. UNSCREW ONE OF THE LOW HEAD SCREWS AND PLACE LOAD CELL

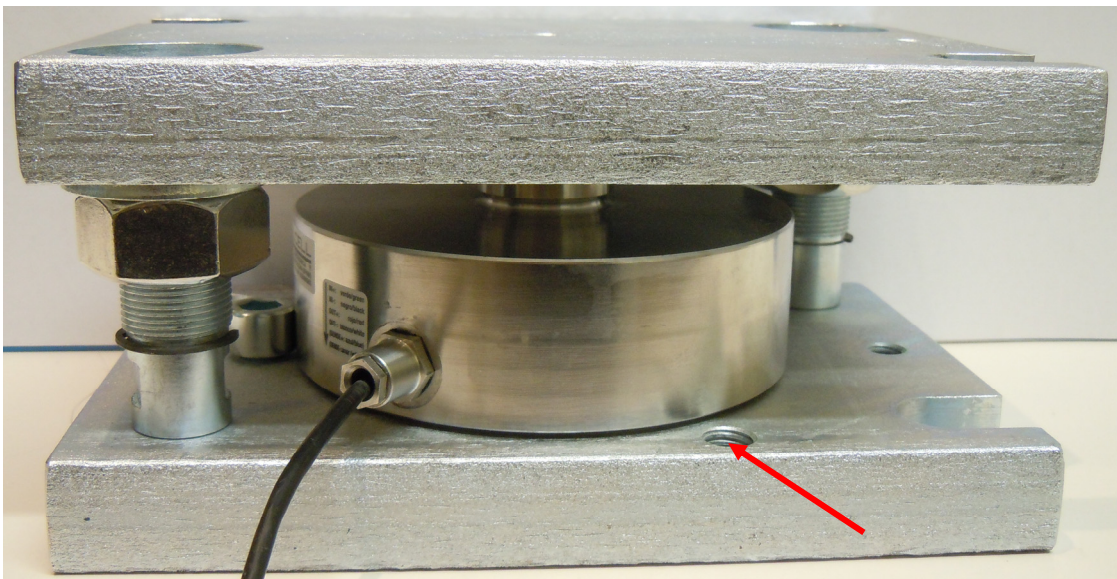


Figure 2

3. SCREW BACK LOW HEAD SCREW

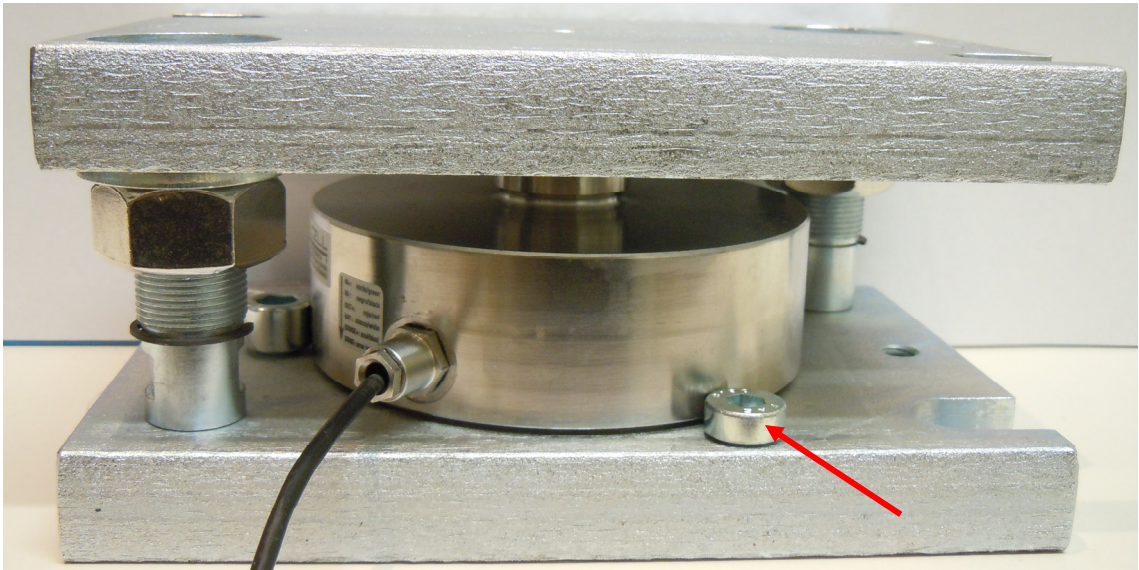


Figure 3

4. UNSCREW THE TWO HEXAGON NUTS UNTIL THE TOP PLATE CONTACTS THE LOAD CELL

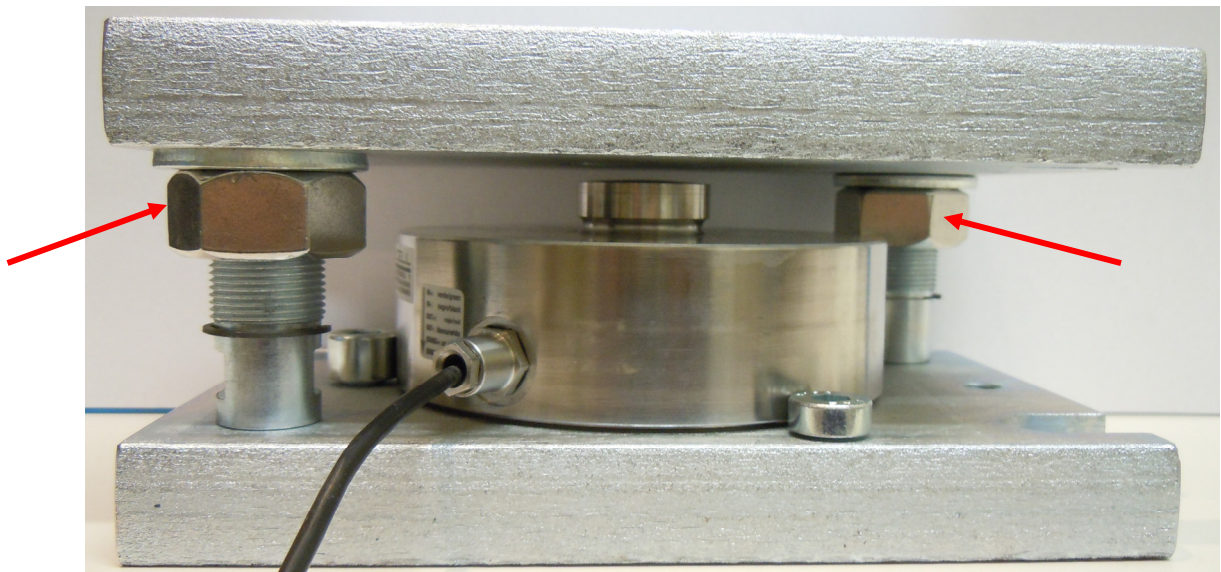


Figure 4

5. LEAVE A CLEARANCE BETWEEN TOP PLATE AND WASHER

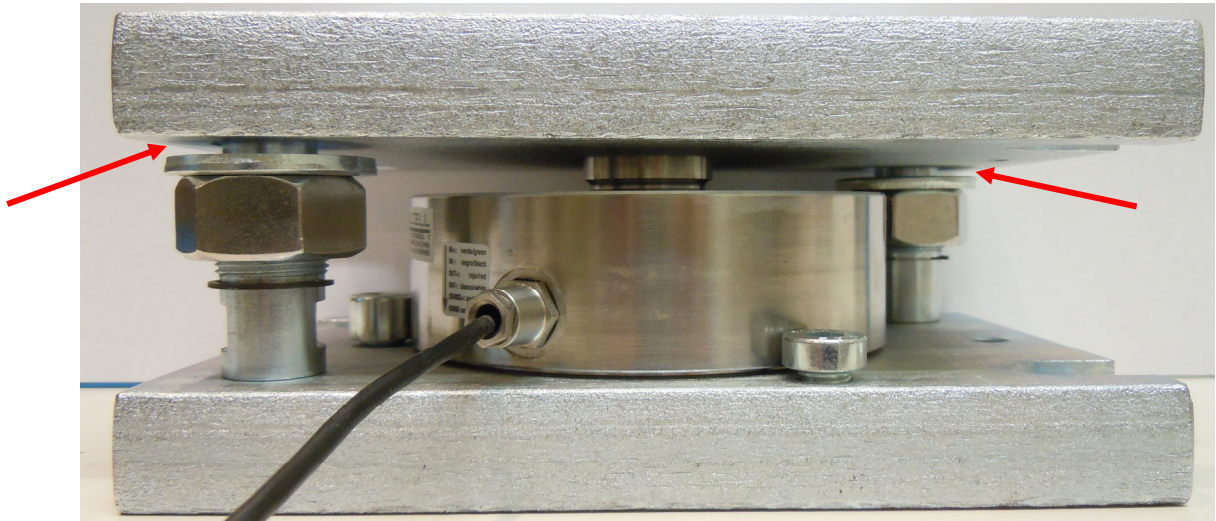


Figure 5